

KINGSMEAD SOUTH THE SHAPE OF THINGS TO COME?

These are just a few examples of some of the properties proposed in the planning application for Kingsmead South. If, like a majority of the Parish Council, you feel that this style of architecture is inappropriate and not in keeping with the character of the area you need to make your views known to Milton Keynes Partnership before January 24th.

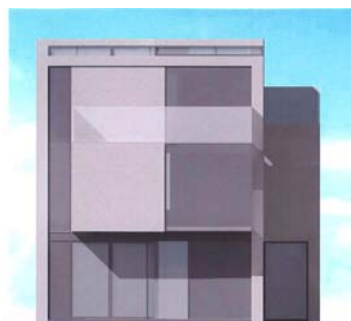


The plans are available to view in the Council Offices at Saxon Gate and at MKP's offices in Midsummer Boulevard during normal office hours which is not convenient for most people.

The Parish Council have agreed to provide an informal opportunity at the Parish Office at Westcroft (opposite Fish & Chip Shop) to view the plans and discuss the issues next Tuesday 15th January, between 3:00pm and 9:00pm.

If you value your local environment and don't want to see it ruined by inappropriate development come along and talk about it.

Don't leave it to someone else



If you can't make it be sure to make your views known by writing to:



Jennie Cook
Milton Keynes Partnership
Central Business Exchange II
Midsummer Boulevard, MK9 2EA

Quoting Application No: 08/00008/MKPCR

BEFORE January 24th

For more information contact Keith Thomas on: 01908 524337